

CHRONIC LYMPHOCYTIC LEUKEMIA

Chronic lymphocytic leukemia, or CLL, is a slow-growing cancer of the blood and bone marrow.¹
It is the most common type of adult leukemia.²

EACH YEAR IN THE U.S.,
THERE ARE APPROXIMATELY **16,000** NEW CASES OF CLL.³



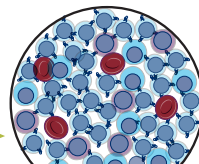
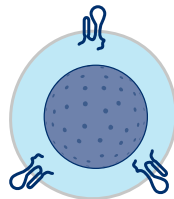
CLL IS TYPICALLY A DISEASE THAT AFFECTS OLDER ADULTS.⁴

Other medical conditions are often also present in this population.⁵

**RARELY SEEN
IN PEOPLE <40⁴**
years of age

**AVERAGE AGE
OF DIAGNOSIS 71⁴**

In **95%**
of people with CLL,
the leukemia starts in white
blood cells called B cells.¹



These CLL cells **multiply uncontrollably**,
eventually crowding out normal cells
in the bone marrow and in
the bloodstream.¹



**SYMPTOMS OF CLL VARY AND
MAY TAKE YEARS TO APPEAR.^{1,3}**

Examples include:



FATIGUE



WEIGHT
LOSS



SWOLLEN
LYMPH NODES
OR SPLEEN



PALENESS



REPEATED
INFECTIONS

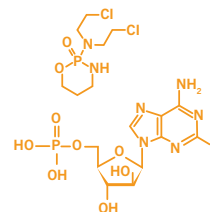


BLEEDING

A "watch and wait" approach, in which no active treatment is given until the disease progresses, is usually taken for people with CLL who do not show any symptoms and have minimal changes in their blood counts.¹

CLL IS INCURABLE.⁶

*Although signs of CLL may
disappear for a while after treatment,
many people require additional treatment
due to the return of cancerous cells.⁶*



CHEMOTHERAPY



MONOCLONAL ANTIBODIES



BONE MARROW OR STEM CELL
TRANSPLANTATION^{1,7}

REFERENCES

1. Leukemia and Lymphoma Society. Chronic Lymphocytic Leukemia. <http://www.lls.org/content/nationalcontent/resourcecenter/freeducationmaterials/leukemia/pdf/cil.pdf>. Accessed May 22, 2013.
2. Leukemia and Lymphoma Society. Chronic Lymphocytic Leukemia: Disease Information & Support. <http://www.lls.org/#/diseaseinformation/leukemia/chroniclymphocyticleukemia/>. Accessed May 30, 2013.
3. American Cancer Society. Cancer Facts & Figures. <http://www.cancer.org/acs/groups/content/@epidemiologysurveillance/documents/document/acspc-036845.pdf>. Accessed May 22, 2013.
4. National Cancer Institute. SEER Stat Fact Sheet: Chronic Lymphocytic Leukemia. <http://seer.cancer.gov/statfacts/html/clyl.html>. Accessed May 22, 2013.
5. Thurmes P, Call T, Slager S, et al. Comorbid conditions and survival in unselected, newly diagnosed patients with chronic lymphocytic leukemia. *Leuk Lymphoma*. Jan 2008;49(1):49-56.
6. Dighiero G and Hamblin T. Chronic Lymphocytic Leukemia. *The Lancet*. 2008; 371:1017-1029.
7. Lymphoma Information Network. Chronic Lymphocytic Leukemia. <http://www.lymphomainfo.net/content/lymphoma-info/chronic-lymphocytic-leukemia-cll>. Accessed March 26, 2013.

RIT0001859100